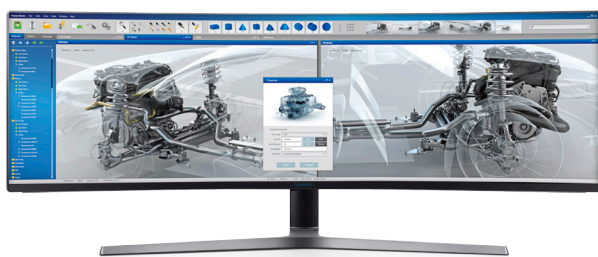









# Super ultra-wide. Super ultra-amazing.

## CHG90 Series 49" Super Ultra-Wide Curved Gaming Monitor

The world's first 49" 32:9 curved gaming monitor delivers a jaw-dropping experience, filling your view with cinematic brilliance. The C49HG90DMN boasts a massive amount of real estate on a single chassis. Design games, write code, edit video and work in multiple windows like never before. Quantum Dot technology, HDR and 1.07B colors deliver stunningly realistic images and color, while 1ms\* response, 144hz refresh rate and FreeSync 2 contribute to smooth, judder-free motion. With Game Modes, Black Equalizer, Low Input Lag Mode, a gaming user interface and Arena Lighting, the CHG90 Series is the premier choice for fast-moving content professionals.



### Key Features

- 
**49", Super Ultra-wide 32:9 Aspect Ratio**  
 Replace clunky multi-monitor setups with a clean, seamless solution. The unique 32:9 aspect ratio is equivalent to two 27" 16:9 monitors. Picture by Picture and included software make picture management simple.
- 
**Ultra-Curved VA Panel, 3840 x 1080 Resolution, 600 Nits**  
 With a stunning 1800mm-radius, super-curved VA panel, the distance from screen to eye is more uniform, resulting in less eye fatigue. Half the resolution of 4K, 600 nits brightness and wide viewing angles deliver incredible picture quality.
- 
**Quantum Dot (Q-LED) Panel, sRGB, DCI, 1.07B Colors**  
 Quantum Dot technology supports up to 125% sRGB color space, 95% DCI and 1.07B colors, for brighter and crisper images, with more natural reds and greens. And every monitor is factory-calibrated.
- 
**High Dynamic Range (HDR) and 3,000:1 Contrast Ratio**  
 HDR provides a higher level of contrast between light and dark images. Combined with a best-in-class 3000:1 contrast ratio, bright colors share the screen with deep shadows and silhouettes.
- 
**144hz Refresh Rate, 1ms\* Response Time, FreeSync 2**  
 Advanced technologies work together to deliver a smooth and crisp presentation of fast-moving content, help eliminate blurring, ghosting and juddering, and reduce lag for gaming and video content.
- 
**Game Modes, Black Equalizer and Low Input Lag Mode**  
 Black gamma, sharpness, contrast and color tune are customizable with 4 different Game Modes (FPS, RPG, RTS, AOS). Samsung Black Equalizer has 20 different dark level values, and Low Input Mode maximizes keyboard and mouse response times.
- 
**Gaming User Interface and Arena Lighting**  
 Equipped with a modern gaming GUI with a 5-way joystick and 3 hot keys to save game settings. Audio-aligned Arena Lighting, located at the back of the monitor, adds to the thrill of gaming.

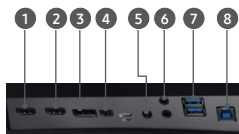
# Samsung CHG90 Series Desktop Monitors



		C49HG90DMN
Display	Screen Size	48.9"
	Flat / Curved	Curved
	Active Display Size (H x V)	1195.8 mm x 336.3 mm
	Screen Curvature	1800R
	Aspect Ratio	32:9 (16:9 x 2)
	Panel Type	VA
	Peak Brightness (Typical)	600 nits
	Brightness (Typical / Min)	350 nits / 250 nits
	Contrast Ratio Static (Typical / Min)	3000:1 / 2400:1
	Dynamic Contrast Ratio	Mega
	HDR (High Dynamic Range)	Yes
	Resolution	3840 x 1080
	Response Time	1ms (MPRT)*
	Viewing Angle (H / V)	178° / 178°
	Color Support	1.07B
	NTSC 1976	Typ. 88%, Min. 84%
	sRGB Coverage	Typ. 125%, Min. 120%
Adobe RGB Coverage	Typ. 92%, Min. 88%	
Refresh Rate	144Hz	
Features	Eco Saving Plus	Yes
	Eye Saver Mode	Yes
	Flicker Free	Yes
	Picture-By-Picture	Yes
	Quantum Dot Color	Yes
	USB Super Charging	Yes
	Easy Setting Box	Yes
	Windows Certification	Windows 10
	AMD FreeSync 2	Yes
	Game Color Mode	Yes
	Screen Size Optimizer	Yes
	Black Equalizer	Yes
	Low Input Lag Mode	Yes
	Refresh Rate Optimizer	Yes
	Custom Key	Yes
	Super Arena Gaming UX	Yes
	Interface	Display Port 1.3
Mini-Display Port 1.3		1
HDMI 2.0		2
Audio In		1
Headphone		1
USB Hub 3.0		2
Operating Conditions	Temperature	10 ~ 40°C
	Humidity	10 - 80% (Non-Condensing)
Calibration	Factory Tuning	Yes
	Color Mode	Custom / High-Brightness / FPS / RTS / RPG / AOS / sRGB / Cinema
	Factory Calibration Report	Yes
Design	Color	Charcoal Black and Titanium
	Stand Type	HAS
	HAS (Height Adjustable Stand)	4.72" ± 0.2" (120.0 ± 5.0 mm)
	Tilt	-2.0° (±2.0°) ~ +15.0° (±2.0°)
	Swivel	-15.0° (±2.0°) ~ +15.0° (±2.0°)
	Wall Mount, VESA	100 x 100, with Included Bracket
Eco Power	Energy Efficiency Class	B
	Power Supply	AC100~240V
Power	Power Consumption (Max / Typ)	113 W / 71 W
	Power Consumption (DPMS)	< 0.5 W
	Power Consumption (Off Mode)	< 0.3 W
	Power Consumption (Yearly)	104 kWh / Year
	Type	Internal Power
Dimensions	Set Dimension with Stand (W x H x D)	47.4" x 20.6" x 10.3" Min., 47.4" x 20.6" x 15.0" Max.
	Set Dimension without Stand (W x H x D)	47.4" x 14.5" x 7.7"
	Package Dimension (W x H x D)	52.0" x 12.4" x 18.7"
Weight	Set Weight with Stand	33.1 lbs
	Set Weight without Stand	26.2 lbs
	Package Weight	44.8 lbs
Accessories	DisplayPort Cable	Yes, 1.5 m
	HDMI Cable	Yes, 1.5 m
	USB Cable	Yes, 1.5 m
	Power Cable	Yes, 1.5 m
	Other	Install CD, Quick Setup Guide
Warranty	Warranty	1 Year

## Connectivity

- HDMI In 1
- HDMI In 2
- DisplayPort In
- Mini DisplayPort In
- Service/Headphone
- Mic In / Mic Out
- USB 1 / USB 2
- PC In



**Learn More** [samsung.com/business](https://samsung.com/business) [insights.samsung.com](https://insights.samsung.com) [samsung.com/b2bmonitors](https://samsung.com/b2bmonitors)

**Product Support** 1-866-SAM4BIZ

**Follow Us** [youtube.com/samsungbizusa](https://youtube.com/samsungbizusa) [@SamsungBizUSA](https://twitter.com/SamsungBizUSA)

**SAMSUNG**